



Should I go to  
Uni?

**Sheffield  
Hallam  
University**

Presented by: Ally

# Why Consider Higher Education?

Higher level  
qualification

Financial  
returns

New  
experiences

Meet  
new  
people

Independence

Build your  
skills

Greater  
career  
options

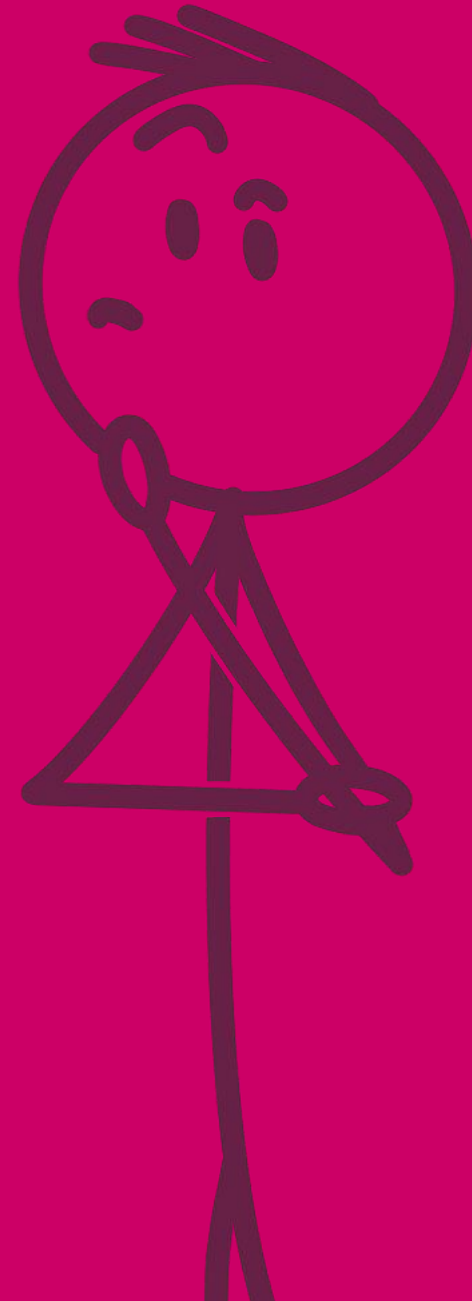
Challenge  
yourself

Expand your  
knowledge

# So why should I go to uni?

We're not here to say that going to university is the only way to succeed, and it's definitely not the right choice for everyone.

However, there are advantages for those who choose to attend, and we break them down into two main categories.



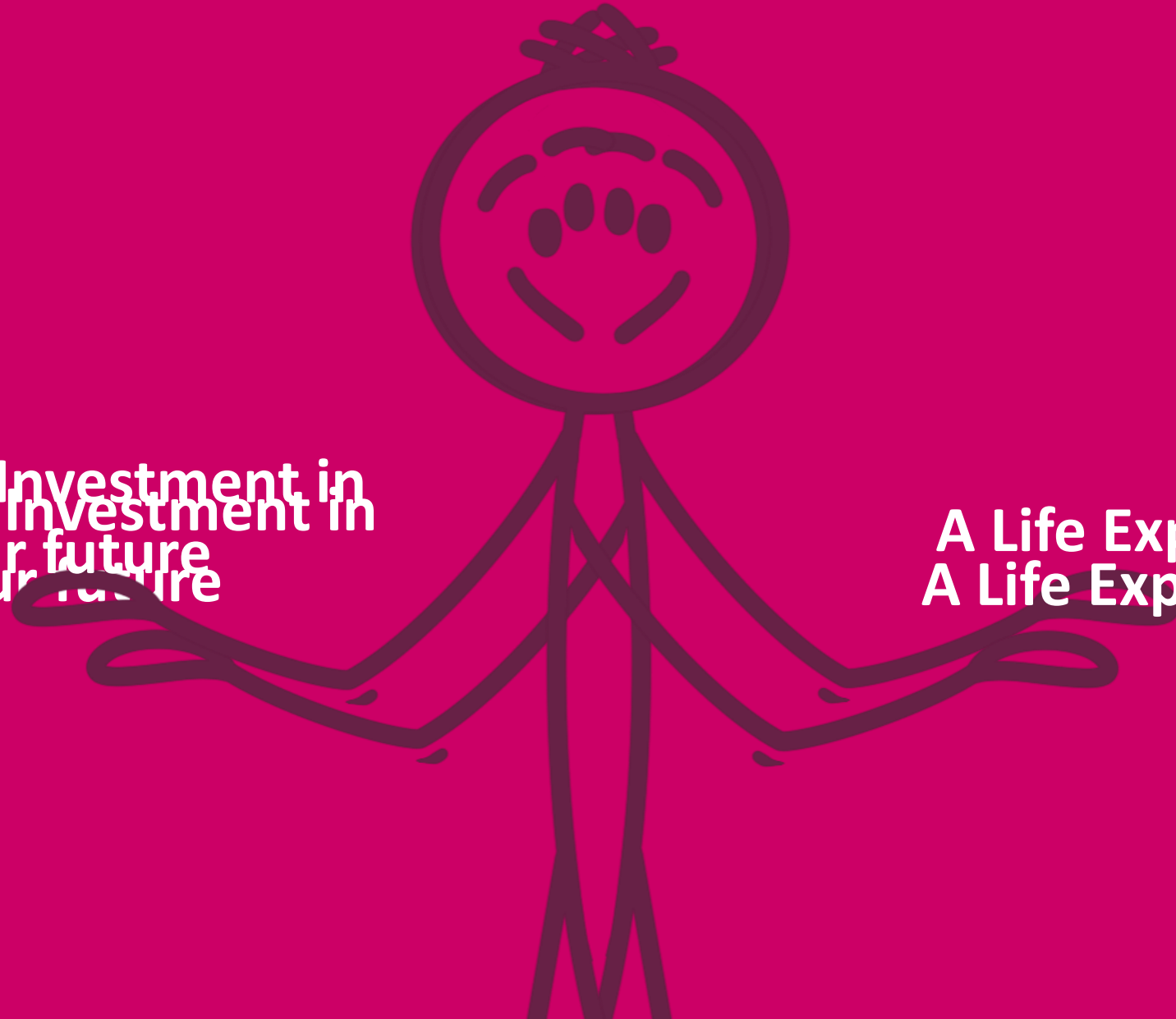
**An Investment in  
your future**

**A Life Experience**



**An Investment in  
your future  
An Investment in  
your future**

**A Life Experience  
A Life Experience**



## An investment in your future

- Gain Specialised knowledge
- Professional accreditation
- Career advancement
- Legal requirement
- Increased earning potential
- Engage with specialist services  
E.G. SHU Enterprise

## A life experience

- Volunteering opportunities
- Work experience
- Meet new people
- Explore a new city
- Study abroad opportunities
- Join clubs and societies
- Engage with the Students Union

# How do I....

## Choose a University?

- Type of university (Russel Group, metropolitan or specialist)
- University wide facilities e.g. Library
- location
- Student support services
- Accommodation options



## Choose a course?

- Entry requirements
- Graduate Outcomes
- Course specific facilities e.g. Science labs
- Course content and structure
- Assessment methods

WHAT DOES  
KNOWLEDGE  
APPLIED  
MEAN?

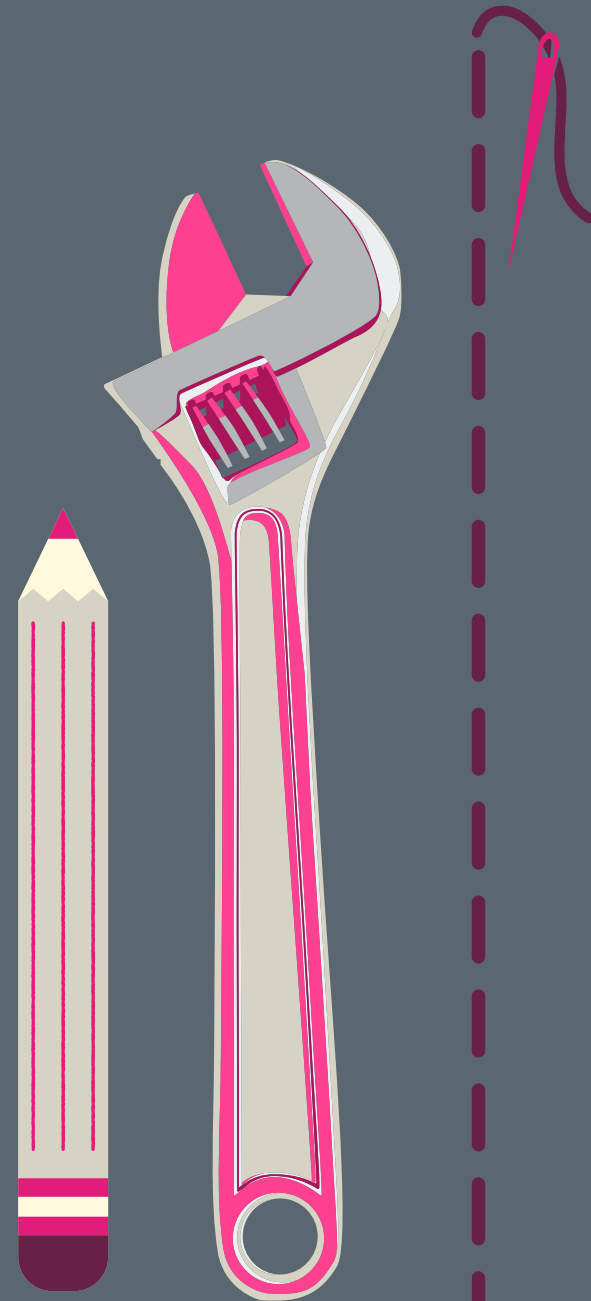
**Sheffield  
Hallam  
University**  
Knowledge Applied





OUR LEARNING IS ABOUT  
PUTTING KNOWLEDGE INTO  
PRACTICE.

WEVE DESIGNED COURSES TO  
HELP YOU ENGAGE WITH THE  
WORLD, COLLABORATE WITH  
OTHERS AND THINK IN NEW  
WAYS.



# What types of university qualifications can I study?



## Undergraduate degrees

Often viewed as the 'traditional degree' pathway

Typically takes 3-4 years to complete

Allows you to specialise in a specific subject area

Full or part-time study options; placement years often available



## How will I learn?

Lectures, seminar, independent study

Coursework, exams, portfolios and placements may be used for assessment

£9250 tuition fee, maintenance loans available

# What types of university qualifications can I study?



## Foundation Year

Typically a 1-year programme

Designed to bridge the gap between further education (A Levels / BTECs and undergraduate degrees)

Useful if you don't yet have the right qualifications for a full degree in your chosen subject



## Good to know

Learn in the same way as an undergraduate degree

Students often progress to complete full undergraduate after completing a foundation year

Student finance available, offered in a variety of subjects

# What types of university qualifications can I study?



## Degree Apprenticeship

Typically a 3-4 year programme

Specialise in a specific subject area

Focused primarily on the workplace, which means apprentices may miss out on the traditional university campus experience

The employer typically covers the cost of the apprenticeship training



## Good to know

Large time commitment as apprentices must balance work responsibilities with academic studies.

Earn a degree while working and getting paid by an employer.

# Professional Development opportunities at university

## Volunteering



A great way to both contribute to society, and build professional networks and strengthen your CV.

## SHU Enterprise



We have the largest free student consultancy service in the UK. We won the “2021 Outstanding Entrepreneurial University of the year”.

## Study abroad



Under our “Go Global” scheme, there are a number of opportunities you can get involved with

## Part time Job



Often students work a few hours a week while studying to earn money and gain vital work experience.

## Placement years



Most of our courses offer an optional placement year, a fantastic opportunity to build industry contacts.

# How do I apply?

- Apply through the University & Colleges Admissions Service (UCAS)
- Online at [www.ucas.com](http://www.ucas.com)
- Choose up to five institutions and courses
- Pay app fee (£27) then use UCAS Track

# UCAS

- **Summer of Y12**  
Research options, courses & universities
- **Start of Y13**  
Begin UCAS application
- **November/December**  
School & College internal deadlines
- **January**  
Equal Consideration Deadline  
*NOTE: Some courses and institutions have earlier deadlines!*
- **March**  
Student Finance opens / Accommodation applications
- **May**  
Respond to offers / Decline by Default Deadline
- **August**  
Results Day / Confirmation / Clearing
- **September**  
University courses start

# What is SHU Progress?

SHU Progress provides support for applicants whose personal circumstances might mean that there are barriers to going to university.

The scheme provides additional support in the year of application and throughout the application process, including your transition to becoming a university student:

- A personal contact at the university
- Referrals to specialist teams
- Exclusive events at the university
- Support with the cost of travelling to the university
- Support with making the best applications to the university, including preparing for interviews
- Exclusive updates through emails and the SHU Progress Members Area
- A contextual offer\* and additional consideration during the admissions process

**Questions/Contact us**

[SHU-Progress@shu.ac.uk](mailto:SHU-Progress@shu.ac.uk)

0114 225 4777

## How to join

Ask a professional (such as a teacher, social worker, support worker etc.) who knows you and your background to fill out a quick nomination form found at

[shu.ac.uk/shuproggress](http://shu.ac.uk/shuproggress)

## Groups we support

- Care Leavers
- Estranged students
- Care experienced students
- Carers
- Disabled students
- Experienced circumstances that have disrupted their Level 3 studies
- Financial difficulties/hardship
- Unable to move away from home area
- Mature students
- Homeless/at risk of homelessness
- Refugees/Asylum seekers
- From a military family
- Military veterans or service leavers
- From a Black British background



## Fill in the "More about you" section of your UCAS form

Here you can tell Universities about any circumstances that you might need support for during your studies.



### What does it ask about?

If you:

- have a disability
- are estranged from your parents
- have caring responsibilities
- are a parent
- are a refugee or asylum seeker
- are part of a military family
- are a military service leaver
- received free school meals in secondary school
- have been in care (this is in the Diversity & inclusion section)

**Profile**

|   |   |  |
|---|---|--|
| <b>Personal details</b><br>Name, age, title and gender<br>✓ Section complete  | <b>Contact &amp; residency details</b><br>Address, email, telephone and where you live<br>✓ Section complete                        | <b>Nationality details</b><br>Birthplace and nationalities<br>✓ Section complete         |
| <b>Supporting information</b><br>So that providers know how to support you during your studies<br>✓ Section complete                        | <b>English language skills</b><br>Is English your first language?<br>✓ Section complete   | <b>Finance &amp; funding</b><br>Tell us how you'll fund your study<br>✓ Section complete |
| <b>Diversity &amp; inclusion</b><br>Only shared with a provider once you have a place or your application is archived<br>Start this section | <b>More about you</b><br>Tell us about any circumstances that you might need support for during your studies.<br>Start this section |  |

### Why should you fill it in?

- 1) Universities use this information to **connect you to the support** you are entitled to
- 2) Admissions staff can **consider your achievements and potential in context**
- 3) The information you share is confidential – **it will never negatively impact your application** and will only have a positive impact



# Contextual offers at Sheffield Hallam



Contextual offers help make sure that everyone who applies has a fair chance of getting a place, regardless of their background.

## Who could get a contextual offer?

- SHU Progress members
- Applicants who tell us about their circumstances on their UCAS form

\*Your eligibility also depends on the course you're applying to, and the qualifications you're studying.

## How do they work?

- If you are given a contextual offer, it will be personalised to you and your predicted grades.
- It may also mean we can be more flexible in confirming your place when we receive your results.
- You'll also get access to support throughout the year to prepare for University.

